

LIVE WELL CENTER FOR INNOVATION AND LEADERSHIP



What is the Live Well Center for Innovation and Leadership?

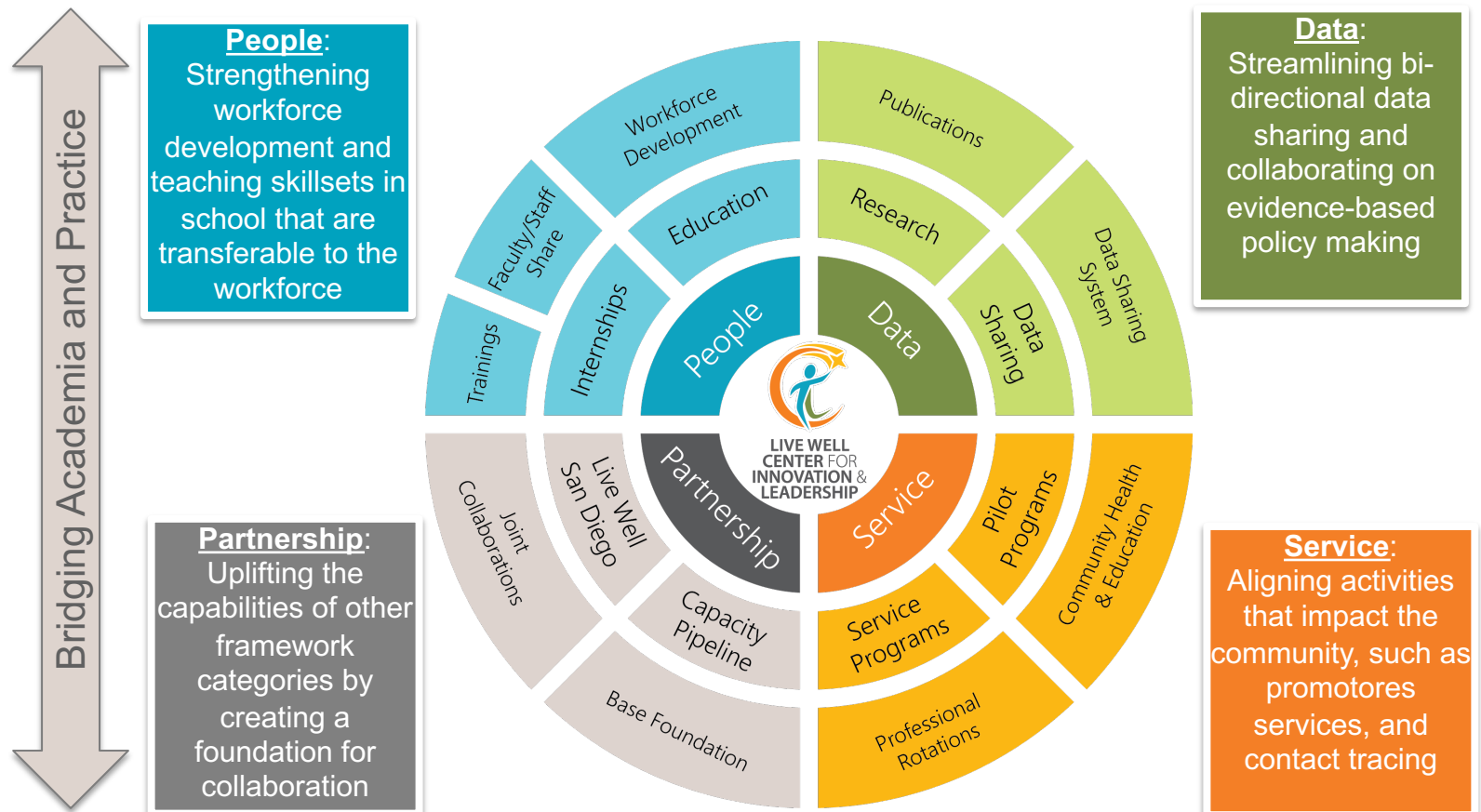
The Live Well Center for Innovation and Leadership is a formal partnership between the County of San Diego and San Diego State University (SDSU) to strengthen the linkage between health and human services practice and its academic base. This effort will be essential to enhancing education, training, research, and service.

Integration in Education, Research, Workforce Development and Service

The Model

The new Live Well Center for Innovation and Leadership adapts the national Academic Health Department model, which is a formal affiliation of a local public health department and an academic institution to enhance such things as training, research, service and workforce development, for the benefit of both organizations and the community as whole. Because the County's Health and Human Services Agency (HHS) is an integrated health, housing, and human services department, this partnership will expand beyond the traditional public health focus to include collaboration across the SDSU College of Health and Human Services (CHHS) and will align with the shared *Live Well San Diego* vision of a healthy, safe and thriving region.

Data, People, Service, and Partnership are the foundation of the Live Well Center for Innovation and Leadership framework and integrated across both institutions.



LIVE WELL CENTER FOR INNOVATION AND LEADERSHIP



The Live Well Center for Innovation and Leadership represents the first academic health department effort in California, and the first partnership in the nation that includes both health and human services departments.

Steering Committee: Guides strategy, policy, and activity of the Live Well Center for Innovation and Leadership.

Steering Committee Members – SDSU/CHHS

- Steven Hooker, Co-Chair, Dean, College of Health and Human Services
- Tracy Finlayson, Professor, School of Public Health
- Steve Hornberger, Director, Social Policy Institute and Co-Director, Center for Excellence in Aging and Longevity
- Karen Macauley, Professor and Director, School of Nursing
- Amanda McClain, Assistant Professor, Nutritional Sciences
- Corinne McDaniels-Davidson, Director, Institute for Public Health
- Jong Won Min, Director, School of Social Work
- Eyal Oren, Director, School of Public Health
- Lianne Urada, Assistant Professor, School of Social Work
- Ignatius Nip, Director, School of Speech, Language, and Hearing Sciences
- Matthew Mahar, Director, School of Exercise and Nutritional Sciences

Steering Committee Members – COSD/HHSA

- Eric McDonald, Co-Chair, Interim Agency Director and Chief Medical Officer
- Luke Bergmann, Director, Behavioral Health Services
- Patty Kay Danon, Chief Operations Officer
- Kimberly Evers, Director, Human resources
- Naomi Chavez, Acting Director, Aging and Independence Services
- Kimberly Giardina, Director, Child Welfare Services
- Elizabeth Hernandez, Director, Public Health Services
- Barbara Jiménez, Director, Homeless Solutions and Equitable Communities
- Justine Kozo, Regional Community Coordinator, Office of Equitable Communities
- Angela Mitchell, Chief Nursing Officer, Office of Nursing Excellence
- Carey Riccitelli, Director, Office of Strategy and Innovation
- Rick Wanne, Director, Self-Sufficiency Services
- Wilma Wooten, Public Health Officer, Public Health Services
- David Estrella, Director, Housing and Community Development

Coordination Team

- SDSU: Eyal Oren, Jong Won Min, Karen Macauley
- HHSA: Carey Riccitelli, Justine Kozo, Nicole Villa, Van Ha
- SDSU/HHSA: Live Well Center for Innovation and Leadership Director: Nicole Magnuson

For questions and more information, please contact Nicole Magnuson at nmagnuson@sdsu.edu.